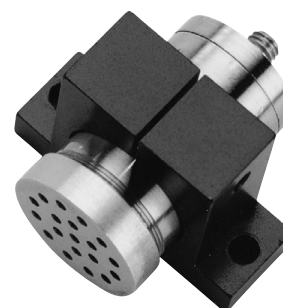
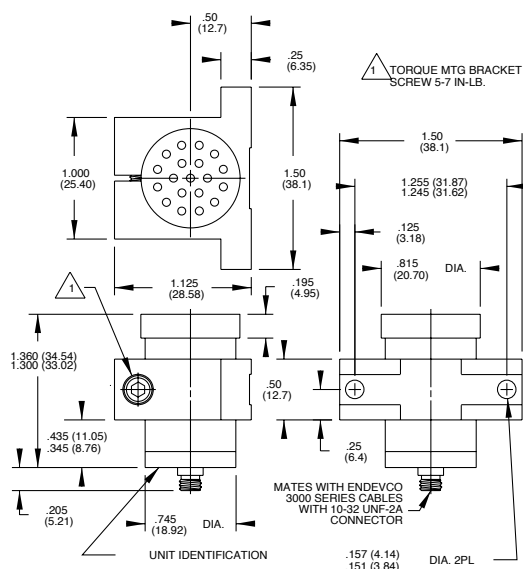


Piezoelectric microphone

Model 2510-R



STANDARD TOLERANCE
INCHES (MILLIMETERS)
.XX = +/- .02 (.X = +/- .5)
.XXX = +/- .010 (.XX = +/- .25)

Key features

- Requires no external power
- Hermetically sealed
- Vibration compensated
- Operational range, 100 to >180 dB SPL
- High intensity acoustic measurement
- High temperature to +500°F (+260°C)

Description

The Endevco® model 2510-R microphone measures high intensity acoustic noise and very low pressure fluctuations. The rugged, hermetically sealed construction and extremely wide temperature range -67°F to +500°F (-55°C to +260°C) make this transducer extremely useful over a wide range of environmental conditions, including insensitivity to altitude changes, and the transducer has vibration compensation incorporated into the sensing element. The microphone is a self-generating device that requires no external power source for operation.

The model 2510-R features a very thick diaphragm that prevents puncturing or damage due to particle impact, accidental mishandling, or high pressure pulses. Insulation between the transducer and mounting surface prevents data-degrading ground loops. The model 2510-R is intended primarily to operate into charge amplifiers. Long cables may be used between the transducer and charge converter without affecting charge sensitivity. Although the basic design is directed toward maximizing charge characteristics, the model 2510-R also gives excellent results when operated into voltage amplifiers.

Piezoelectric microphone | Model 2510-R

The following performance specifications are typical values, referenced at +75°F (+24°C) and 100 Hz, unless otherwise noted.

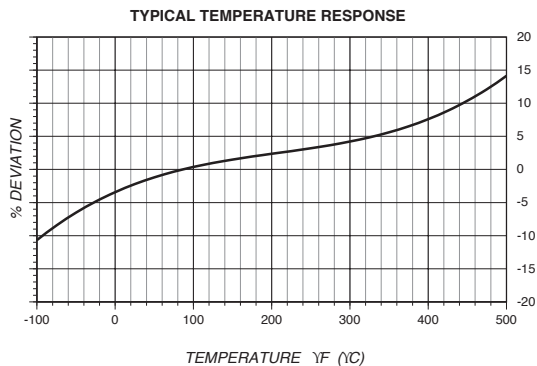
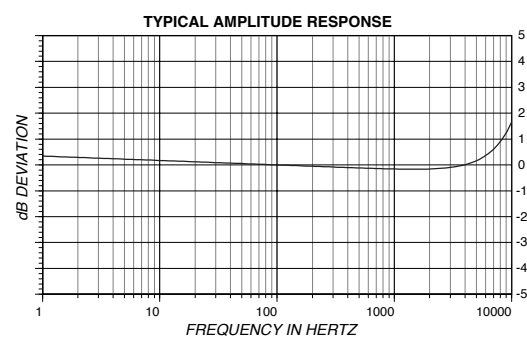
Specifications		
Dynamic characteristics		Units
Charge sensitivity, Typical	pC rms @ 140 dB SPL[1]	31
	pC rms/psi (2)	1069
	pC rms/N/m ² (3)	0.155
	dB re 1pC rms @ 1 µbar	-33.1
Range	dB SPL	100 to > 180
Frequency Response		See Typical Amplitude Response
Resonance frequency	kHz	30
Amplitude response		
±1 dB	Hz	2 to 4 kHz
±3 dB	Hz	1 to 10 kHz
Temperature Response		See Typical Curve
Amplitude linearity		
120 to 164 dB SPL	dB	0.5
Electrical characteristics		
Resistance	MΩ	≥ 20,000
Capacitance	pF	5200
Grounding		Case ground insulated from mounting bracket. Case isolated from mounting bracket by 1 MΩ, minimum
Environmental characteristics		
Temperature range		-67°F to +500°F (-55°C to +260°C)
Humidity		Hermetically sealed
Vibration sensitivity		< Output of unit at 105 dB SPL @ 1 g pK, Up to 3kHz
Sinusoidal vibration limit	g pk	150
Shock limit	g pk	1000
Physical characteristics		
Dimensions		See outline drawing
Weight	gm (oz)	57 (2.0)
Case material		Stainless steel
Connector		Coaxial, 10-32 type, mates Endevco 3000 Series cables
Mounting Torque	lbf-in (Nm)	10 (1.1)
Calibration		
Supplied:		
Charge sensitivity	pC rms @ 140 dB SPL	
	pC pk @ 140 dB SPL	
Capacitance	pF	

Piezoelectric microphone | Model 2510-R

Accessories		
Product	Description	2510-R
EH303	Mounting screw, 6-32 (x 2)	Included

Notes

- 1. Reference: 0 dB = 0.0002 μbar rms (dyne/cm² rms) = 20x10⁻⁶ N/m² rms = 20 μPa rms.
- 2. 140 dB SPL= 2.9x10⁻²psi rms
- 3. 140 dB SPL= 200 N/m² rms
- 4. Maintain high levels of precision and accuracy using Endevco's factory calibration services. Call Endevco's inside sales force at 866-ENDEVCO for recommended intervals, pricing and turn-around time for these services as well as for quotations on our standard products.



10869 NC Highway 903, Halifax, NC 27839 USA
endevco.com | sales@endevco.com | 866 363 3826

© 2025 PCB Piezotronics - all rights reserved. PCB Piezotronics is a wholly-owned subsidiary of Amphenol Corporation. Endevco is an assumed name of PCB Piezotronics of North Carolina, Inc., which is a wholly-owned subsidiary of PCB Piezotronics, Inc. Accumetrics, Inc. and The Modal Shop, Inc. are wholly-owned subsidiaries of PCB Piezotronics, Inc. IMI Sensors and Larson Davis are Divisions of PCB Piezotronics, Inc. Except for any third party marks for which attribution is provided herein, the company names and product names used in this document may be the registered trademarks or unregistered trademarks of PCB Piezotronics, Inc., PCB Piezotronics of North Carolina, Inc. (d/b/a Endevco), The Modal Shop, Inc. or Accumetrics, Inc. Detailed trademark ownership information is available at www.pcb.com/trademarkownership.